

PRODUCT INFORMATION PACKET

marathon[®]
Motors

Model No: 256THTL5776
Catalog No: Y548
10,1200,TENV,256TC,3/60/230/460
1000:1 Speed Ratio



Regal and Marathon are trademarks of Regal Beloit Corporation or one of its affiliated companies.
©2019 Regal Beloit Corporation, All Rights Reserved. MC017097E

REGAL[®]



Nameplate Specifications

Output HP	10 HP	Output KW	7.5 kW
Frequency	60 Hz	Voltage	230/460 V
Current	28.0/14.0 A	Speed	1160 RPM
Service Factor	1	Phase	3
Efficiency	89.5 %	Duty	Continuous
Insulation Class	F	Design Code	INV
KVA Code	J	Frame	256TC
Enclosure	Totally Enclosed Non Ventilated	Overload Protector	No
Ambient Temperature	40 °C	Drive End Bearing Size	6309
Opp Drive End Bearing Size	6206	UL	Recognized
CSA	Y	CE	Y
IP Code	43		

Technical Specifications

Electrical Type	Squirrel Cage Inverter Duty	Starting Method	Inverter Only
Poles	6	Rotation	Reversible
Mounting	Rigid Base	Motor Orientation	Horizontal
Drive End Bearing	Ball	Opp Drive End Bearing	Ball
Frame Material	Aluminum	Shaft Type	T
Overall Length	26.87 in	Frame Length	14.75 in
Shaft Diameter	1.625 in	Shaft Extension	3.75 in
Assembly/Box Mounting	F1/F2 Capable		
Outline Drawing	B-SS330110E-1475	Connection Diagram	A-EE7308T

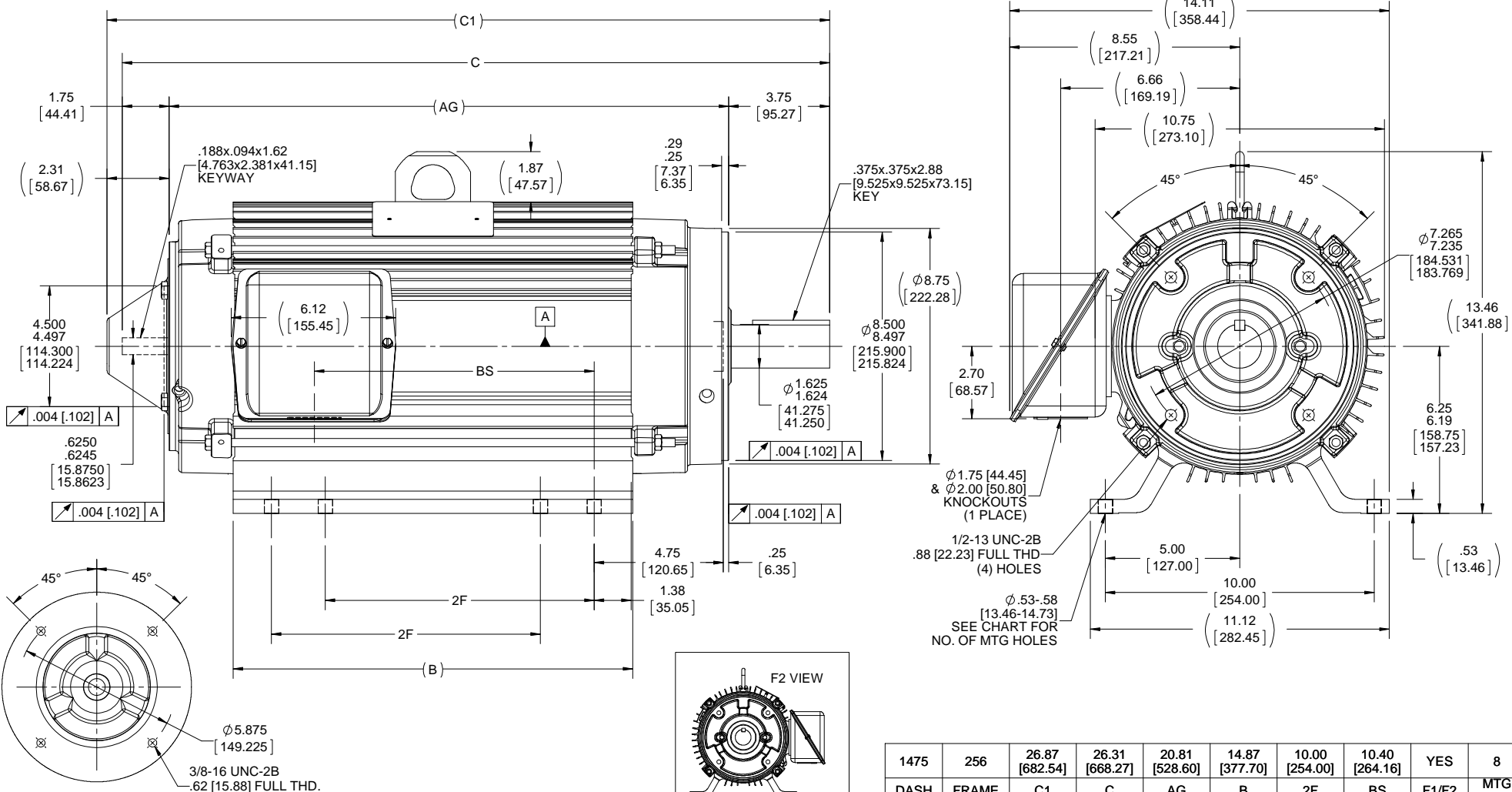
This is an uncontrolled document once printed or downloaded and is subject to change without notice. Date Created: 08/27/2019

B

B

A

A



FRONT END VIEW (SHAFT COVER REMOVED)

- NOTES:
1. CONDUIT BOX CAN BE ROTATED IN 90° STEPS.
 2. SEE CHART FOR "F2" CAPABILITY. IF YES, BOX CAN BE MOUNTED ON OPPOSITE SIDE BY REMOVING BRACKETS AND TURNING FRAME 180°.
 3. NAMEPLATE READ FROM CONDUIT BOX SIDE OF MOTOR.

DRAWING REVISION A	REVISION BY W. JOERGER	DATE 01-19-2018
ECO ECO-0131008	APPROVED BY E. HEIL	DATE 01-19-2018
ECO DESCRIPTION RELEASED FOR PRODUCTION		
<small>COPYRIGHT REGAL BELOIT AMERICA, INC. ALL RIGHTS RESERVED. PROPRIETARY AND CONFIDENTIAL INFORMATION - THIS DOCUMENT IS THE PROPERTY OF REGAL BELOIT AMERICA, INC. (OWNER) AND CONTAINS OWNER'S PROPRIETARY INFORMATION. ANY PERSON, CORPORATION OR OTHER FIRM RECEIVING IT IS DEEMED, BY RECEIVING IT, TO AGREE THAT IT, AND/OR ANY PART OF IT, SHALL NOT BE DISCLOSED TO ANY PERSON, CORPORATION OR OTHER ENTITY, DUPLICATED, AND/OR USED, EXCEPT AS EXPRESSLY APPROVED IN WRITING IN ADVANCE BY OWNER. THIS DOCUMENT SHALL BE RETURNED TO OWNER UPON REQUEST. IT MAY BE SUBJECT TO CERTAIN RESTRICTIONS UNDER APPLICABLE EXPORT CONTROL LAWS AND REGULATIONS.</small>		

TOLERANCES UNLESS OTHERWISE SPECIFIED:

DEC.	INCH	mm	ANGLE
X	+0.1	[+2.5]	±7-30°
XX	+0.03	[+0.76]	
XXX	+0.005	[+0.127]	
XXXX	+0.0005	[+0.0127]	

REMOVE BURRS & BREAK SHARP EDGES: .003/.015 [0.076/.381] X 45° CORNER FILLETS: R.02 [51] MACHINED SURFACES: 200 INCH/mm 5.1

DRAWN BY W. JOERGER	DATE 01-19-2018
APPROVED BY E. HEIL	DATE 01-19-2018
REFERENCE	THIRD ANGLE PROJECTION

1475	256	26.87 [682.54]	26.31 [668.27]	20.81 [528.60]	14.87 [377.70]	10.00 [254.00]	10.40 [264.16]	YES	8
DASH	FRAME	C1	C	AG	B	2F	BS	F1/F2	MTG HOLES
DRAWING NUMBER		REGAL™ Regal Beloit America, Inc.							
SIZE		DESCRIPTION							
B		OUTLINE							
		210 FR. - 256 MTG - ALUMINUM FRAME							
		MATERIAL				PROCESS/FINISH			
		SS330110E							
		SHEET				1 OF 1			

HIGH VOLTAGE



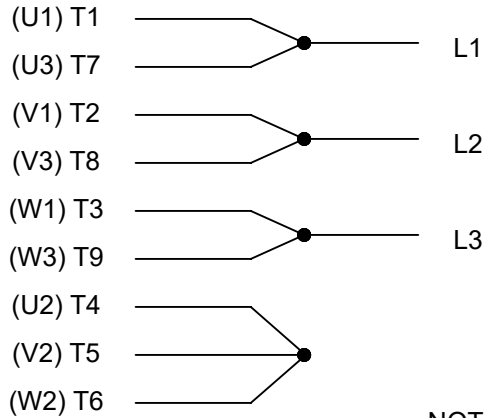
**THREE PHASE
DUAL VOLTAGE MOTOR**

THERMO-PROTECTORS
CONNECTED IN SERIES



**NOTE FOR FACTORY USE ONLY:
TO SURGE TEST FOR COMMON CONNECT:
HIGH VOLT: CONNECT P1 TO T1
THEN P2 TO L1
LOW VOLT: CONNECT P1 TO T1 & T7,
THEN P2 TO L1**

LOW VOLTAGE



VIEW OF TERMINAL END

NOTE: LEAD'S COLOR CAN BE YELLOW OR WHITE FOR MT2 PLANT

DRAWING REVISION T	REVISION BY ZR	DATE 01-14-2019		DRAWN BY SMC	Regal Beloit America, Inc.
ECO ECO-0159915	APPROVED BY DR	DATE 01-15-2019		DATE 05-13-1992	
ECO DESCRIPTION ADDED TERMINAL CONNECTION DIAGRAM				APPROVED BY TB	DESCRIPTION CONN DIAGRAM-INTERNAL 3 PHASE - DUAL VOLTAGE MOTOR
<small>COPYRIGHT REGAL BELOIT AMERICA, INC. ALL RIGHTS RESERVED. PROPRIETARY AND CONFIDENTIAL INFORMATION - THIS DOCUMENT IS THE PROPERTY OF REGAL BELOIT AMERICA, INC. ("OWNER") AND CONTAINS OWNER'S PROPRIETARY INFORMATION. ANY PERSON, CORPORATION OR OTHER FIRM RECEIVING IT IS DEEMED, BY RECEIVING IT, TO AGREE THAT IT, AND/OR ANY PART OF IT, SHALL NOT BE DISCLOSED TO ANY PERSON, CORPORATION OR OTHER ENTITY, DUPLICATED, AND/OR USED, EXCEPT AS EXPRESSLY APPROVED IN WRITING IN ADVANCE BY OWNER. THIS DOCUMENT SHALL BE RETURNED TO OWNER UPON REQUEST. IT MAY BE SUBJECT TO CERTAIN RESTRICTIONS UNDER APPLICABLE EXPORT CONTROL LAWS AND REGULATIONS.</small>			DATE 05-13-1992	MATERIAL	PROCESS/FINISH
			REFERENCE EE7308/EE7300	SIZE A	DRAWING NUMBER EE7308T
			THIRD ANGLE PROJECTION		

CERTIFICATION DATA SHEET

Model#: 256THTL5776 DH
 CONN. DIAGRAM: A-EE7308T
 OUTLINE: B-SS330110-1475

WINDING#: K2156158 NONE 1
 ASSEMBLY: F1/F2 CAPABLE

TYPICAL MOTOR PERFORMANCE DATA

HP	KW	SYNC. RPM	F.L. RPM	FRAME	ENCLOSURE	KVA CODE	DESIGN		
10	7.50	1200	1160	256TC	TENV	J	INV		
PH	Hz	VOLTS	FL AMPS	START TYPE	DUTY	INSL	S.F	AMB°C	ELEVATION
3	60	230/460	28/14	INVERTER ONLY	CONTINUOUS	F3	1.0	40	3300

FULL LOAD EFF: 89.5	3/4 LOAD EFF: 90.2	1/2 LOAD EFF: 90.2	GTD. EFF	ELEC. TYPE	NO LOAD AMPS
FULL LOAD PF: 75.5	3/4 LOAD PF: 69	1/2 LOAD PF: 57	87.5	SQ CAGE INV DUTY	14 / 7

F.L. TORQUE	LOCKED ROTOR AMPS	L.R. TORQUE	B.D. TORQUE	F.L. RISE°C
45.3 LB-FT	194 / 97	103 LB-FT 227	135 LB-FT 298	100

SOUND PRESSURE @ 3 FT.	SOUND POWER	ROTOR WK ²	MAX. WK ²	SAFE STALL TIME	STARTS /HOUR	APPROX. MOTOR WGT
60 dBA	70 dBA	1.5 LB-FT ²	0 LB-FT ²	0 SEC.	0	229 LBS.

EQUIVALENT WYE CKT. PARAMETERS (OHMS PER PHASE)

R1	R2	X1	X2	XM
0.53392	0.69296	2.2578	2.32312	30.53
RM	ZREF	XR	TD	TD0
2925.2	28.4	4	0.0085	0.125

*** SUPPLEMENTAL INFORMATION ***

DE BRACKET TYPE	ODE BRACKET TYPE	MOUNT TYPE	ORIENTATION	SEVERE DUTY	HAZARDOUS LOCATION	DRIP COVER	SCREENS	PAINT
C-FACE	BRAKE OR ENCODER	RIGID	HORIZONTAL	FALSE	NONE	FALSE	NONE	BLACK (ENAMEL)
BEARINGS		GREASE	SHAFT TYPE	SPECIAL DE	SPECIAL ODE	SHAFT MATERIAL	FRAME MATERIAL	
DE	OPE							
BALL	BALL	POLYREX EM	T	NONE	NONE	1045 HOT ROLLED (C-204)	ALUMINIUM	
6309	6206							

THERMO-PROTECTORS				THERMISTORS		CONTROL		SPACE /n HEATERS	
THERMOSTATS	PROTECTORS	WDG RTDs	BRG RTDs						
TSTATS (NIC)	NOT	NONE	NONE	NONE	NONE	FALSE	NONE	VOLTS	

If Inverter equals NONE, contact factory for further information

INVERTER TORQUE: CONSTANT 1000.1
INV. HP SPEED RANGE: 2.0 X BASE SPEED
ENCODER: PROVISIONS ONLY
NORTHSTAR ST56
NONE NONE PPR
BRAKE: PROVISIONS ONLY NONE
NONE P/N NONE

*
 N
 O
 T
 E
 S
 *

NONE	NONE	NONE	NONE HZ
NONE FT-LB	NONE V		

DATE: 06/23/2017 04:57:31 AM
FORM 3531 REV.3 02/07/99
** Subject to change without notice.

Data Sheet

Date: 15-06-2017
 Customer: _____
 Attention: _____
 Submitted by: FAREEDA DUDEKULA



256HTL5776

Submittal

Data @ 460 V

Motor Load Data

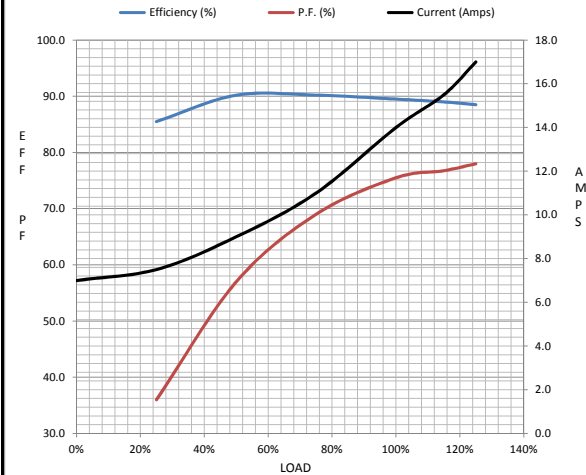
Load	0%	25%	50%	75%	100%	115%	125%	LR
Current (Amps)	7.0	7.5	9.0	11.0	14.0	15.5	17.0	97.0
Torque (ft-lb)	0.00	11.0	22.2	33.5	45.3	48.9	52.5	103
RPM	1200	1190	1180	1170	1160	1,156	1150	0
Efficiency (%)		85.5	90.2	90.2	89.5	89.0	88.5	
P.F. (%)	4.5	36.0	57.0	69.0	75.5	76.8	78.0	42.0

Motor Speed Data

	LR	Pull-Up	BD	Rated	Idle
Speed (RPM)	0	300	825	1160	1200
Current (Amps)	97.0	90.0	60.0	14.0	7.0
Torque (ft-lb)	103	92.5	135	45.3	0.00

Information Block

HP	10.0			
Sync. RPM	1200			
Frame	256			
Enclosure	TENV			
Construction	TTL			
Voltage	230/460 V			
Frequency	60 Hz			
Design	A			
LR Code letter	J			
Service Factor	1.0			
Temp Rise @ FL	100 ° C			
Duty	CONT			
Ambient	40 ° C			
Elevation	1,000 feet			
Rotor/Shaft wk²	1.50 Lb-Ft²			
Ref Wdg	K2156158 NONE			
Sound Pressure @ 1M	60 dBA			
VFD Rating	CONSTANT 1000:1			
Outline Dwg	B-SS330110-1475			
Conn. Diag	A-EE7308T			
Additional Specifications:				
0				
365THFS8036				
EQUIV CKT (OHMS / PHASE)				
R1	R2	X1	X2	Xm
0.5340	0.6930	2.2580	2.3230	30.5300



Speed -Torque Curve

